

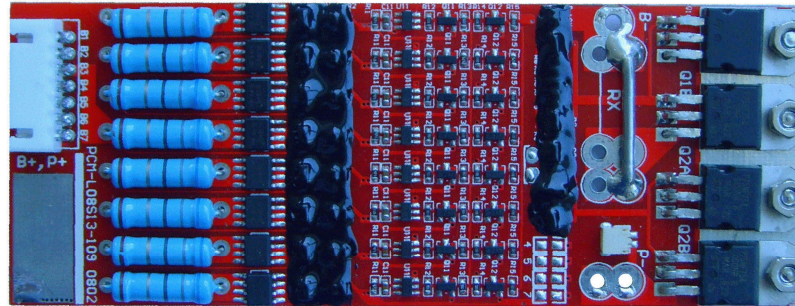
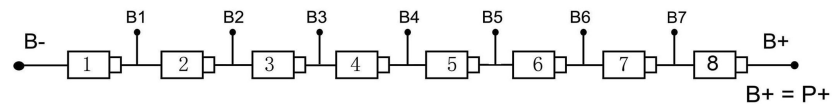
Protection Circuit Module Specifications For 29.6V Li-ion/Li- Po Battery Pack

- Model: PCM-LI29.6V10A
- Apply for:
8 cells Li-ion /Li-polymer battery pack protection
- Dimension: L120*W47*T9mm
- Weight: 39 gram

Electric performance:

- * Overcharge protection voltage for single cell: $4.325 \pm 0.025V$
- * Overdischarge protection voltage for single cell: $2.50 \pm 0.05V$
- * Balance voltage for single cell: $4.20V \pm 0.025V$
- * Overcurrent detection protection: 40~60A
- * Maximal continuous discharging current: 10A
- * Maximal current consumption for single cell: 50uA
- * Protection circuitry resistance: $\leq 20m\Omega$

Port design:



P+/P- = Charge+/-, Discharge+/-