

REV: 105050

**PolySwitch®**  
**PTC Devices**  
 Overcurrent Protection Device

**PRODUCT: SRP200**

DOCUMENT: SCD 21790  
 PCN: 194020  
 REV LETTER: G  
 REV DATE: JULY 25, 2002  
 PAGE NO.: 1 OF 1

**Specification Status: RELEASED**

**Electrical Rating**

**Voltage: 30V MAX**  
**Current: 100A MAX**

**Leads:**

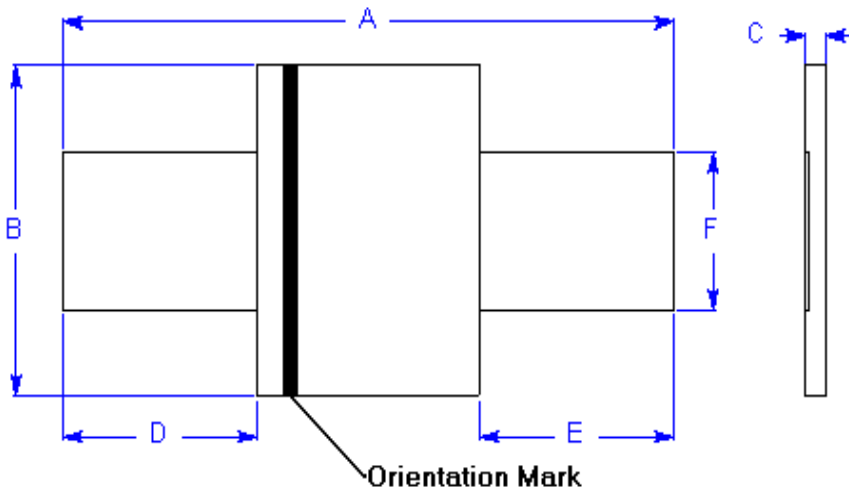
Nickel: 0.125 mm nom.

**Tape:**

Polyester

**Marking:**

- Manufacturer's Mark
- XX 200 — Part Identification
- — Lot Identification



**TABLE I. DIMENSIONS:**

	A		B		C		D		E		F	
	MIN	MAX	MIN	MAX	MIN	MAX	MIN	MAX	MIN	MAX	MIN	MAX
mm:	21.3	23.4	10.2	11.0	0.5	1.1	5.0	7.6	5.0	7.6	4.8	5.4
in*:	(0.84)	(0.92)	(0.40)	(0.43)	(0.02)	(0.04)	(0.20)	(0.30)	(0.20)	(0.30)	(0.19)	(0.21)

\*Rounded off approximation

**TABLE II. PERFORMANCE RATINGS:**

I HOLD	CURRENT TRIP LIMITS								TIME TO TRIP		REFERENCE RESISTANCE		ONE-HOUR POST-TRIP RESISTANCE		TRIPPED-STATE POWER DISSIPATION	
	AMPS AT 0°C		AMPS AT 20°C		AMPS AT 60°C		AMPS AT 80°C		SECONDS AT 20°C, 10 A		OHMS AT 20°C		OHMS AT 20°C		WATTS AT 20°C, 15V	
HOLD	HOLD	TRIP	HOLD	TRIP	HOLD	TRIP	HOLD	TRIP	TYP	MAX	MIN	MAX	MIN	MAX	TYP	MAX
2.0	2.5	5.1	2.0	4.4	1.4	3.0	--	--	1.8	4.0	0.030	0.060	0.030	0.100	1.6	1.9

Reference Documents:  
 Precedence:  
 Effectivity:  
 CAUTION:

PS300  
 This specification takes precedence over documents referenced herein.  
 Reference documents shall be the issue in effect on the date of invitation for bid.  
 Operation beyond the rated voltage or current may result in rupture, electrical arcing or flame.